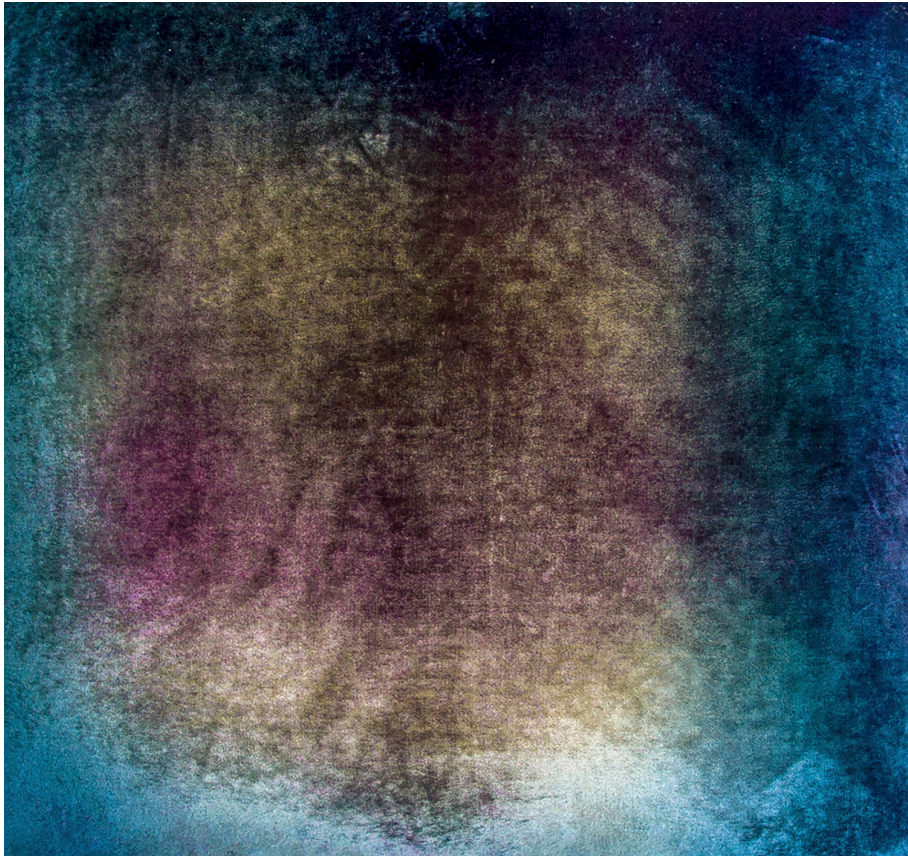


# KEVIN O'BRIEN

## STUDIO



### **Steps Peacock Queen Sham Case with Charmeuse Backing**

**Item Number :** STQS-H21

**Size :** 30"wx20"h

**Shown In :** Peacock

**Material :** Silk Velvet (35% Silk, 65% Rayon)

**Care Instructions :** Dry Clean Only

**Description :** The two sets of interconnected shapes in our Steps pattern evoke the image of a pair of dancers moving gracefully across a floor