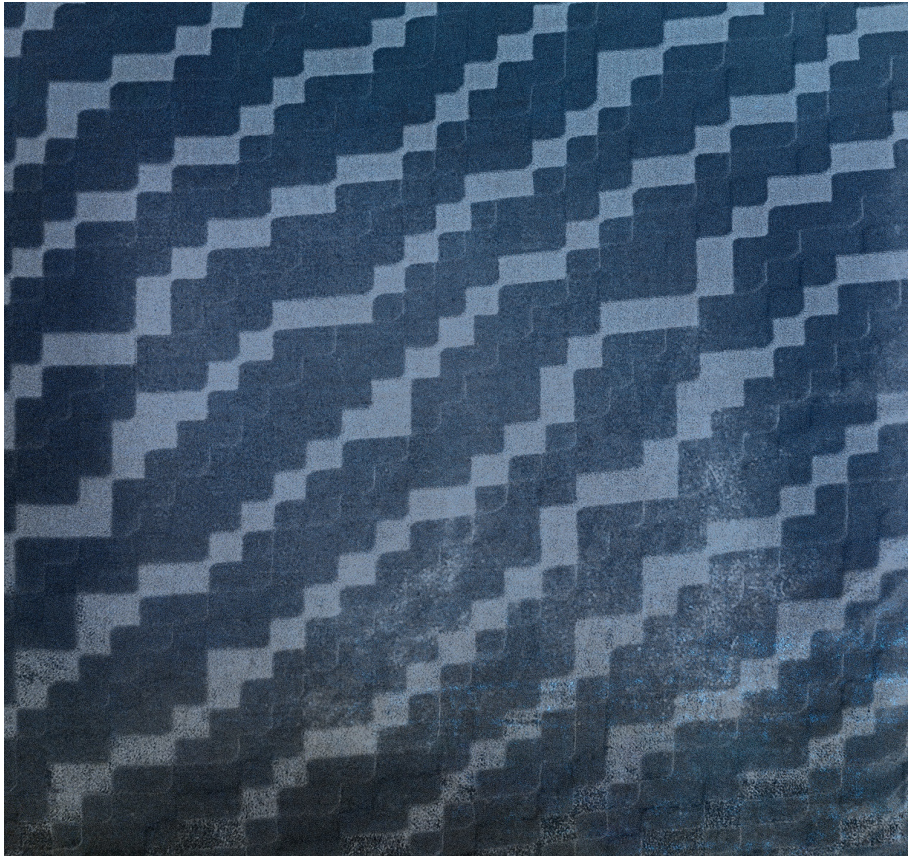


KEVIN O'BRIEN

STUDIO



Steps Cobalt Black Queen Sham Case with Charmeuse Backing

Item Number : STQS-COB

Size : 30"wx20"h

Shown In : Cobalt Black

Material : Silk Velvet (35% Silk, 65% Rayon)

Care Instructions : Dry Clean Only

Description : The two sets of interconnected shapes in our Steps pattern evoke the image of a pair of dancers moving gracefully across a floor