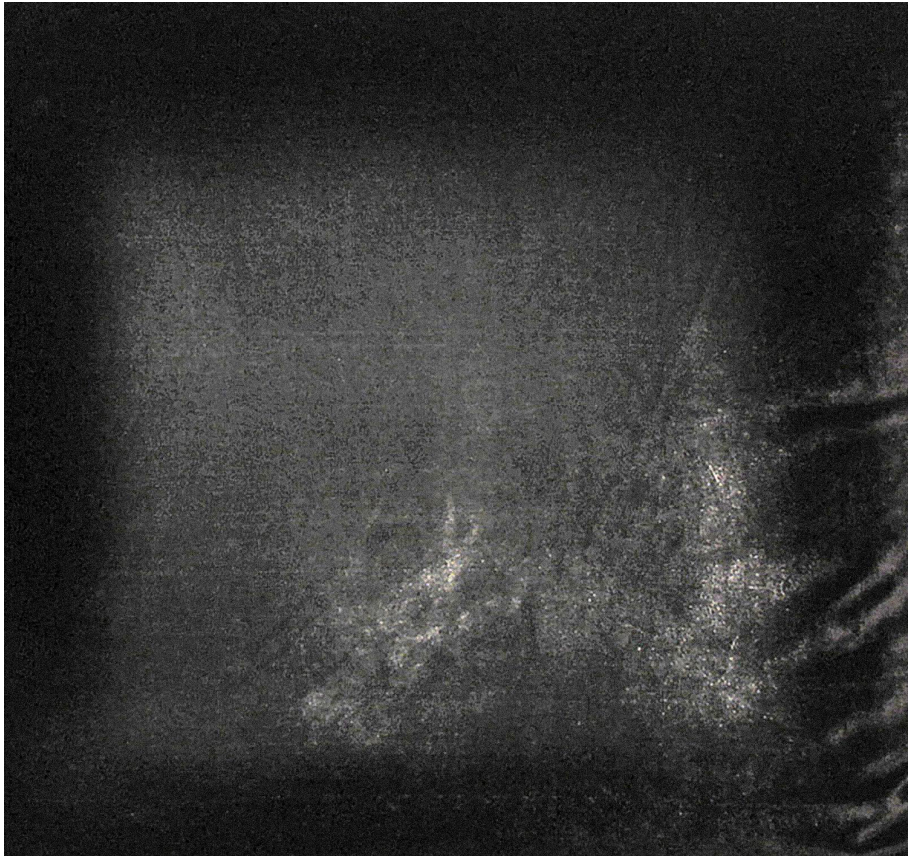


KEVIN O'BRIEN

STUDIO



Steps Smoke Dutch Euro Sham

Item Number : STPDE-H42

Size : 36"wx26"h

Shown In : Smoke

Material : Silk Velvet (35% Silk, 65% Rayon)

Care Instructions : Dry Clean Only

Description : The two sets of interconnected shapes in our Steps pattern evoke the image of a pair of dancers moving gracefully across a floor