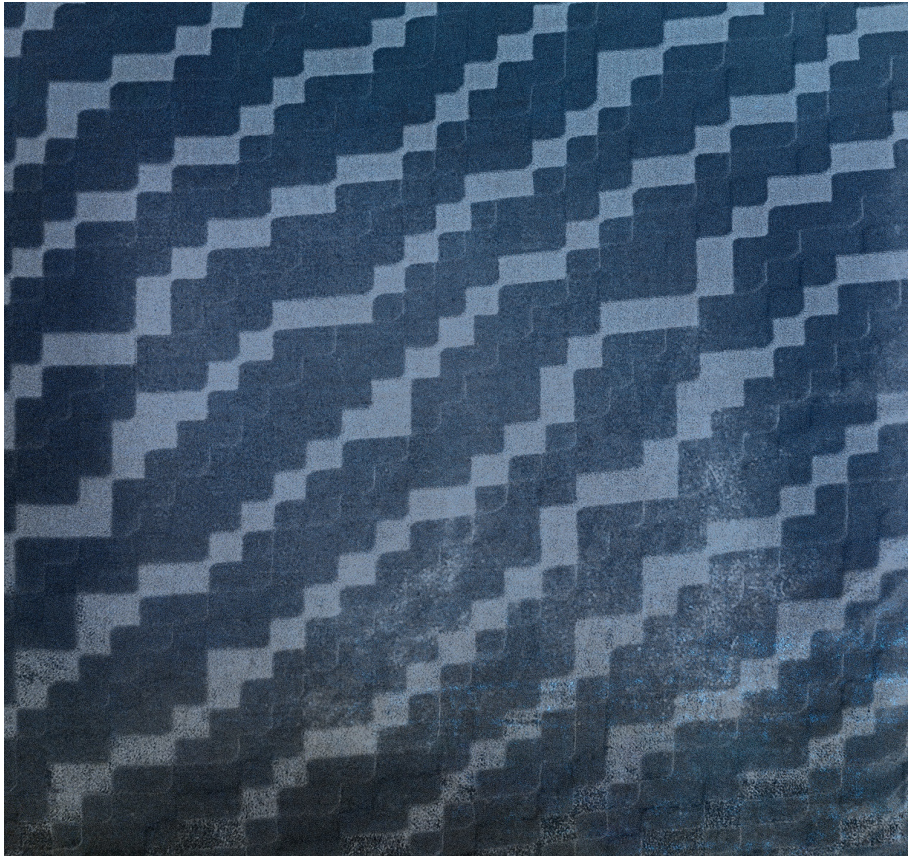


KEVIN O'BRIEN

STUDIO



Steps Cobalt Black King Sham Case with Charmeuse Backing

Item Number : STKS-COB

Size : 36"wx20"h

Shown In : Cobalt Black

Material : Silk Velvet (35% Silk, 65% Rayon)

Care Instructions : Dry Clean Only

Description : The two sets of interconnected shapes in our Steps pattern evoke the image of a pair of dancers moving gracefully across a floor