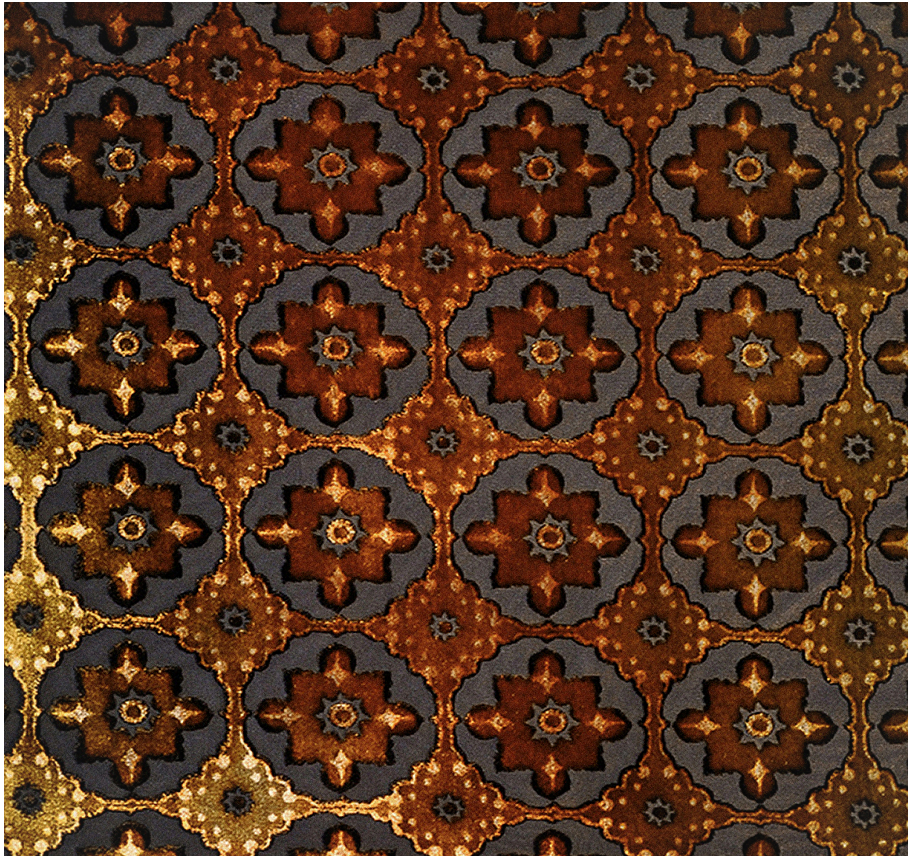


KEVIN O'BRIEN

STUDIO



Small Moroccan Copper Ivy Queen Sham Case with Charmeuse Backing

Item Number : SMORQS-H17

Size : 30"wx20"h

Shown In : Copper Ivy

Material : Silk Velvet (35% Silk, 65% Rayon)

Care Instructions : Dry Clean

Description : The small-scale medallions repeating across the fabric are inspired by the Moroccan tile work commonly found in North African homes. When painted in our vibrant bohemian colors, the tiles warm and enliven any space, just like the Moroccan sun.