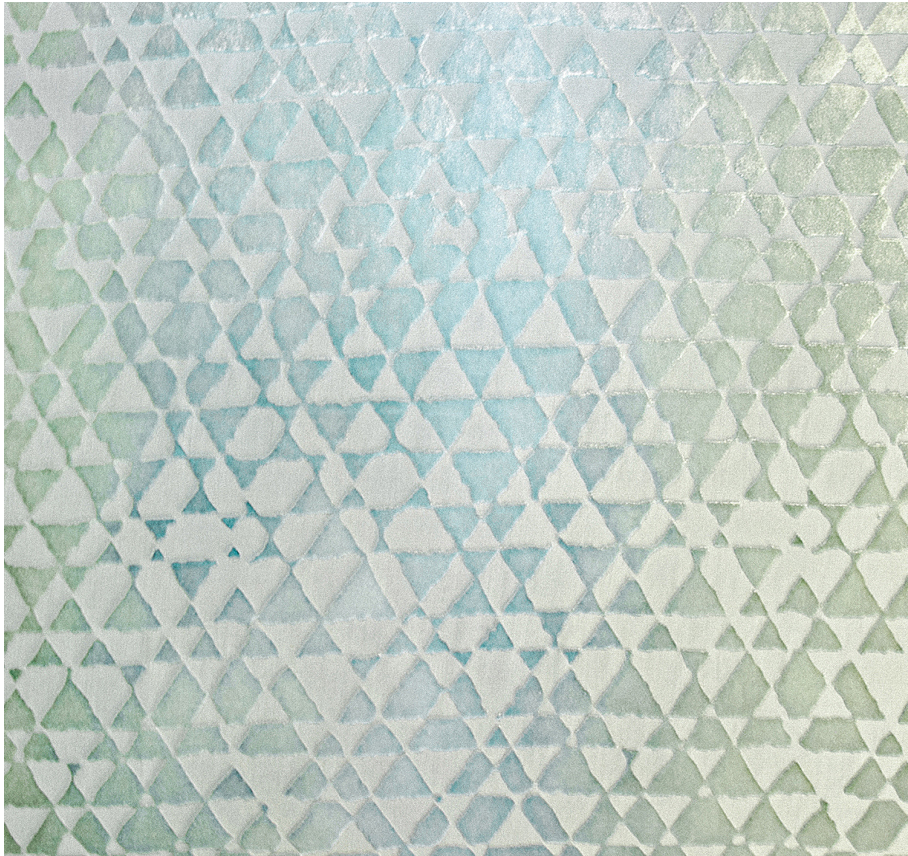


KEVIN O'BRIEN

STUDIO



Triangles Ice Queen Bed Runner with Ombre Velvet Back

Item Number : TRR-Q-H12

Size : 84"wx16"h

Shown In : Ice

Material : Silk Velvet (35% Silk, 65% Rayon)

Care Instructions : Dry Clean Only

Description : The graphic allure of our striking triangle pattern, enriched by our hand-painted colors, is truly luxurious.