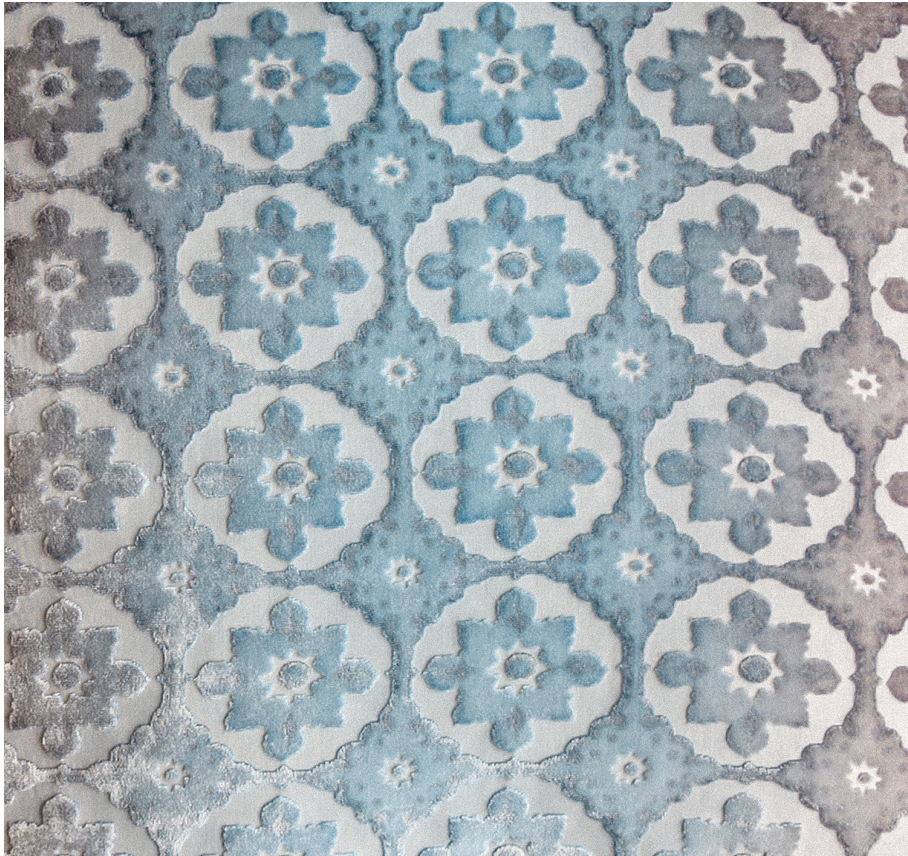


KEVIN O'BRIEN

STUDIO



Small Moroccan Robin's Egg Wide Queen Bed Runner with Ombre Velvet Back

Item Number : SMORWR-Q-ROB

Size : 84"wx24"h

Shown In : Robin's Egg

Material : Silk Velvet (35% Silk, 65% Rayon)

Care Instructions : Dry Clean Only

Description : The small-scale medallions repeating across the fabric are inspired by the Moroccan tile work commonly found in North African homes. When painted in our vibrant bohemian colors, the tiles warm and enliven any space, just like the Moroccan sun.