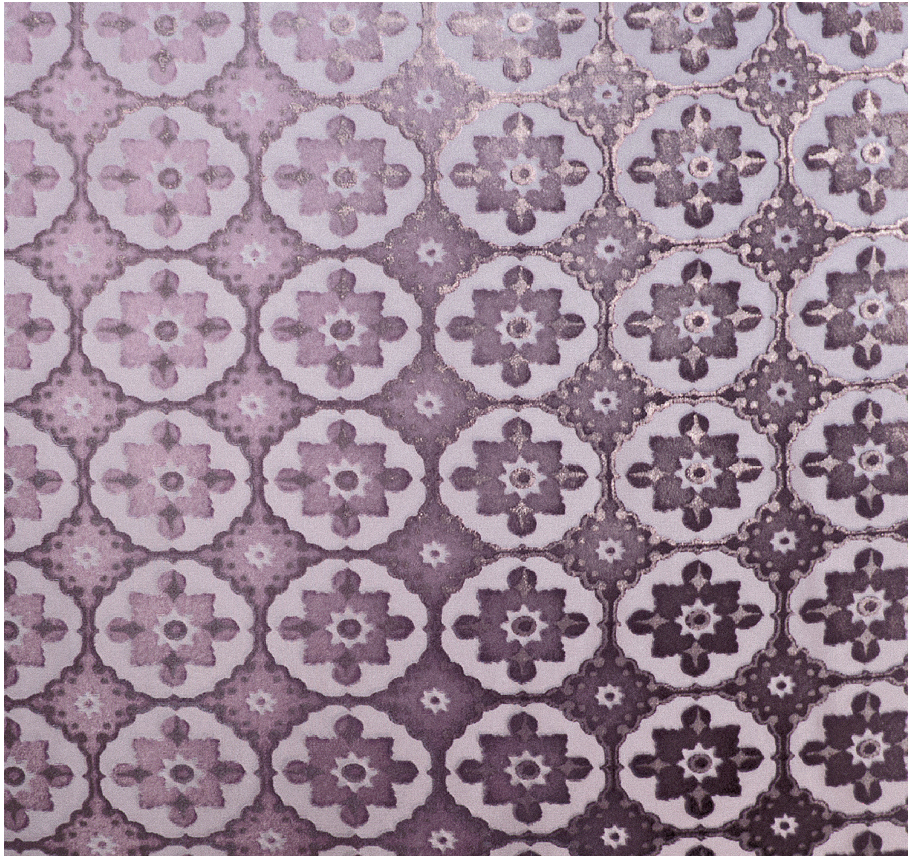


# KEVIN O'BRIEN

## STUDIO



### **Small Moroccan Thistle Wide Queen Bed Runner with Ombre Velvet Back**

**Item Number :** SMORWR-Q-H78

**Size :** 84"wx24"h

**Shown In :** Thistle

**Material :** Silk Velvet (35% Silk, 65% Rayon)

**Care Instructions :** Dry Clean Only

**Description :** The small-scale medallions repeating across the fabric are inspired by the Moroccan tile work commonly found in North African homes. When painted in our vibrant bohemian colors, the tiles warm and enliven any space, just like the Moroccan sun.