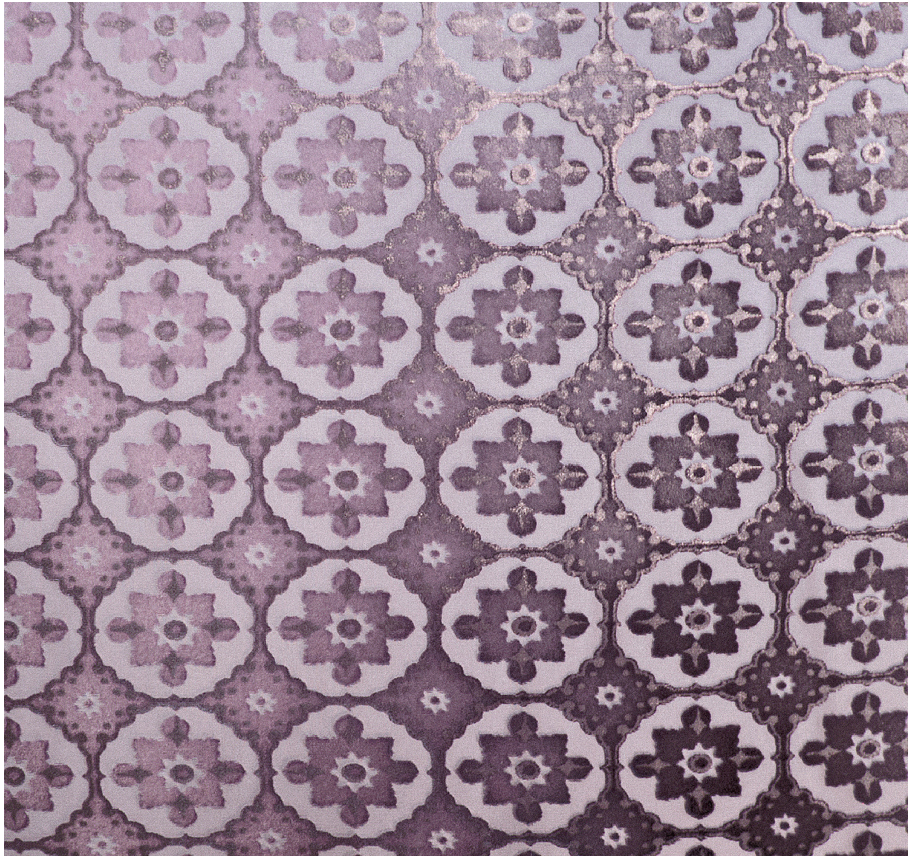


KEVIN O'BRIEN

STUDIO



Small Moroccan Thistle Wide King Bed Runner with Ombre Velvet Back

Item Number : SMORWR-K-H78

Size : 100"wx24"h

Shown In : Thistle

Material : Silk Velvet (35% Silk, 65% Rayon)

Care Instructions : Dry Clean Only

Description : The small-scale medallions repeating across the fabric are inspired by the Moroccan tile work commonly found in North African homes. When painted in our vibrant bohemian colors, the tiles warm and enliven any space, just like the Moroccan sun.