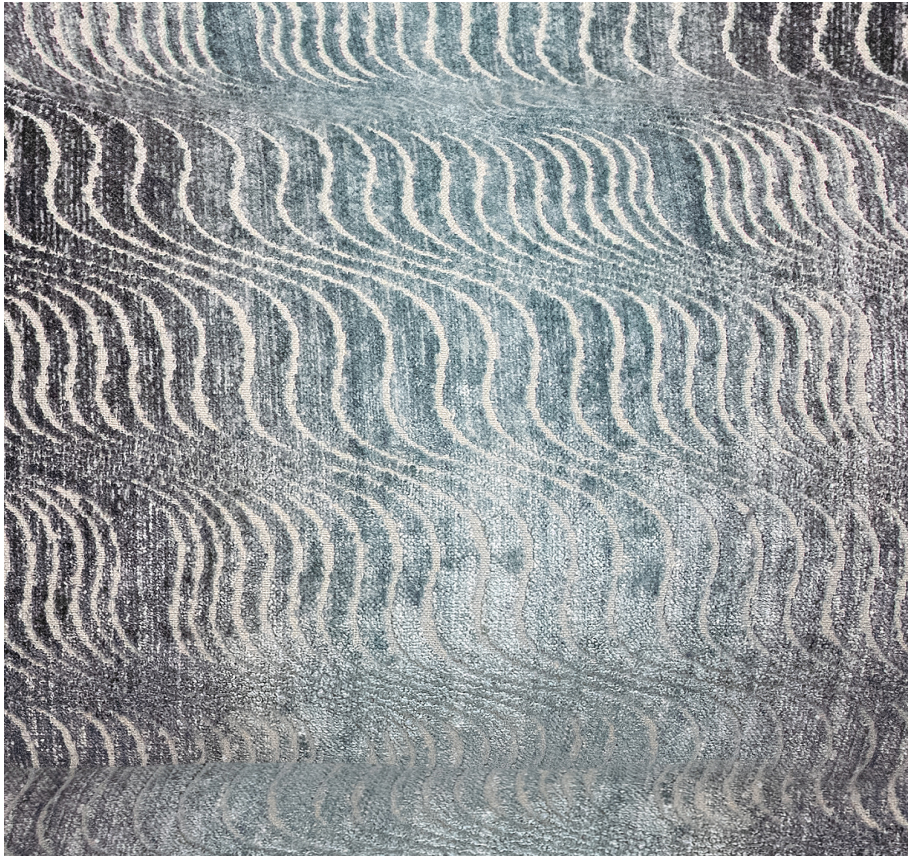


# KEVIN O'BRIEN

## STUDIO



### **Torsion Storm Jacquard Wide Queen Bed Runner**

**Item Number :** TOJWR-Q-STM

**Size :** 84"wx24"h

**Shown In :** Storm

**Material :** 50% CO, 26% Linen, 24% Viscose Blend

**Care Instructions :** Dry Clean

**Description :** Torsion is a flowing geometric pattern featuring undulating waves. Our Jacquard fabrics feature an intricate fiber weave enhanced by stunning hand-painted color and texture layers.