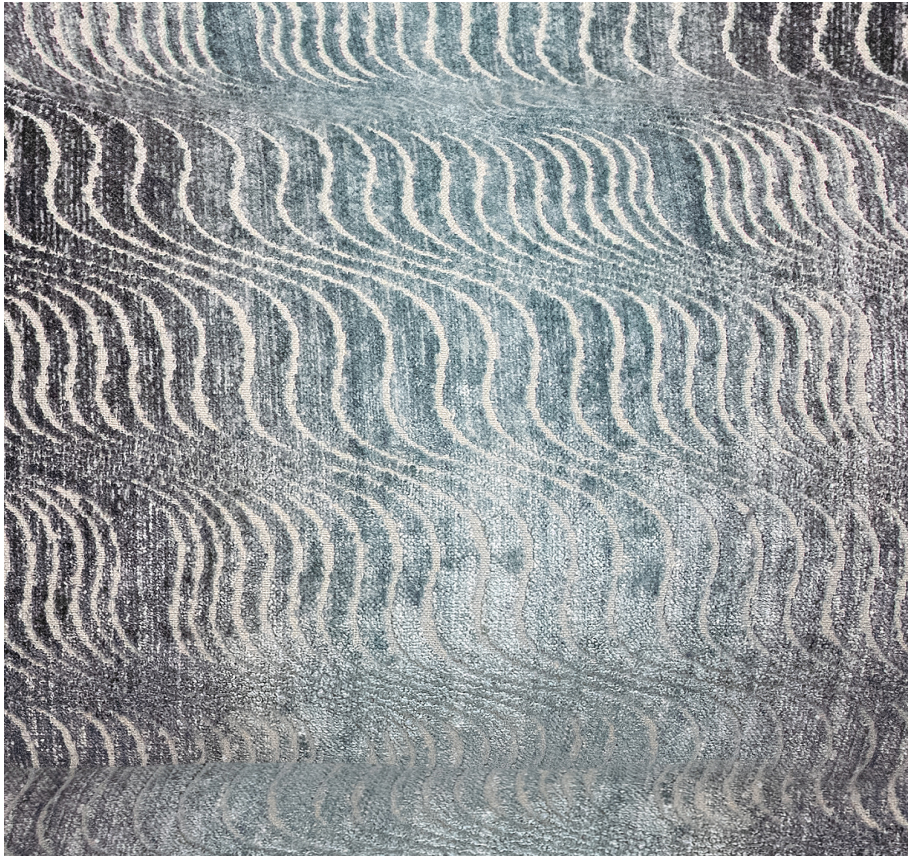


KEVIN O'BRIEN

STUDIO



Torsion Storm Jacquard Wide King Bed Runner

Item Number : TOJWR-K-STM

Size : 100"wx24"h

Shown In : Storm

Material : 50% CO, 26% Linen, 24% Viscose Blend

Care Instructions : Dry Clean

Description : Torsion is a flowing geometric pattern featuring undulating waves. Our Jacquard fabrics feature an intricate fiber weave enhanced by stunning hand-painted color and texture layers.