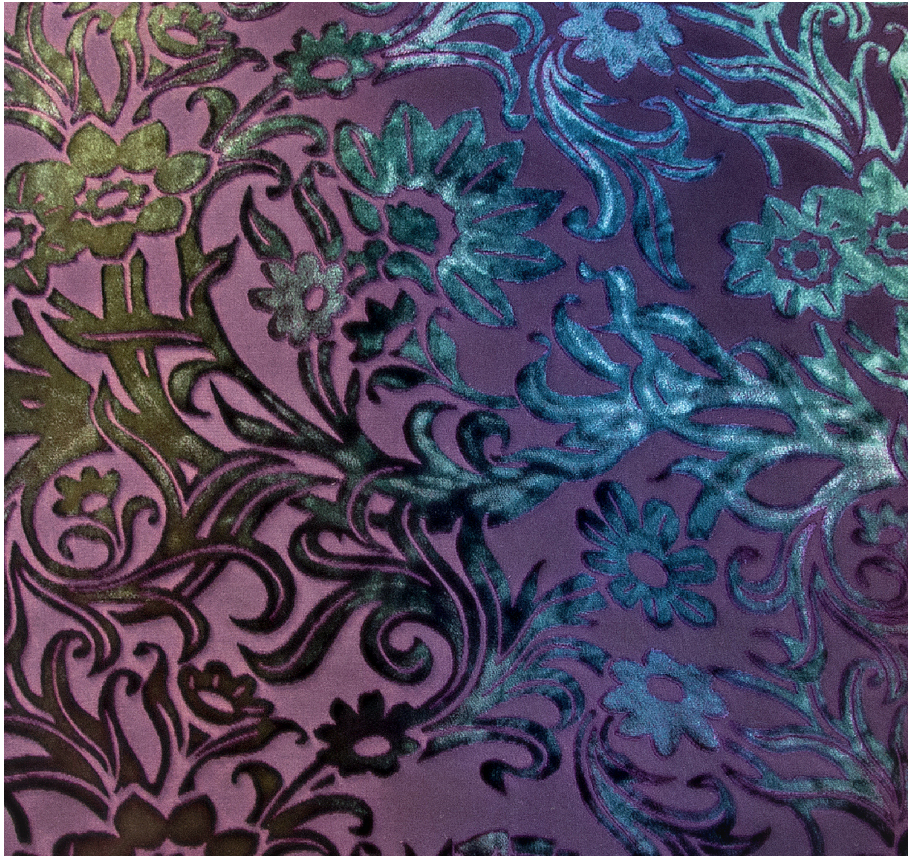


# KEVIN O'BRIEN

## STUDIO



### **Prospect Park Peacock Queen Bed Runner with Ombre Velvet Back**

**Item Number :** PKR-Q-H21

**Size :** 84"wx16"h

**Shown In :** Peacock

**Material :** Silk Velvet (35% Silk, 65% Rayon)

**Care Instructions :** Dry Clean Only

**Description :** Prospect Park draws inspiration from a historic textile created by Kevin for the Brooklyn Museum. Like the renowned park in Brooklyn, this design carries historical significance while exhibiting a lively modernity.