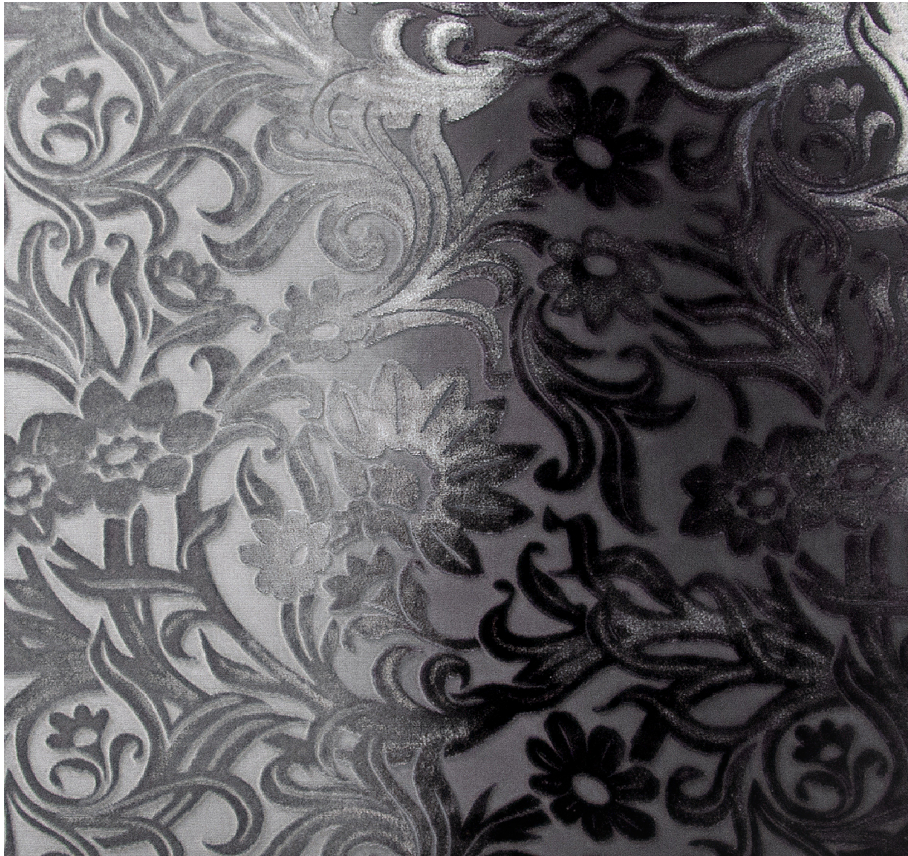


KEVIN O'BRIEN

STUDIO



Prospect Park Smoke Dutch Euro Sham

Item Number : PKDE-H42

Size : 36"wx26"h

Shown In : Smoke

Material : Silk Velvet (35% Silk, 65% Rayon)

Care Instructions : Dry Clean

Description : Prospect Park draws inspiration from a historic textile created by Kevin for the Brooklyn Museum. Like the renowned park in Brooklyn, this design carries historical significance while exhibiting a lively modernity.