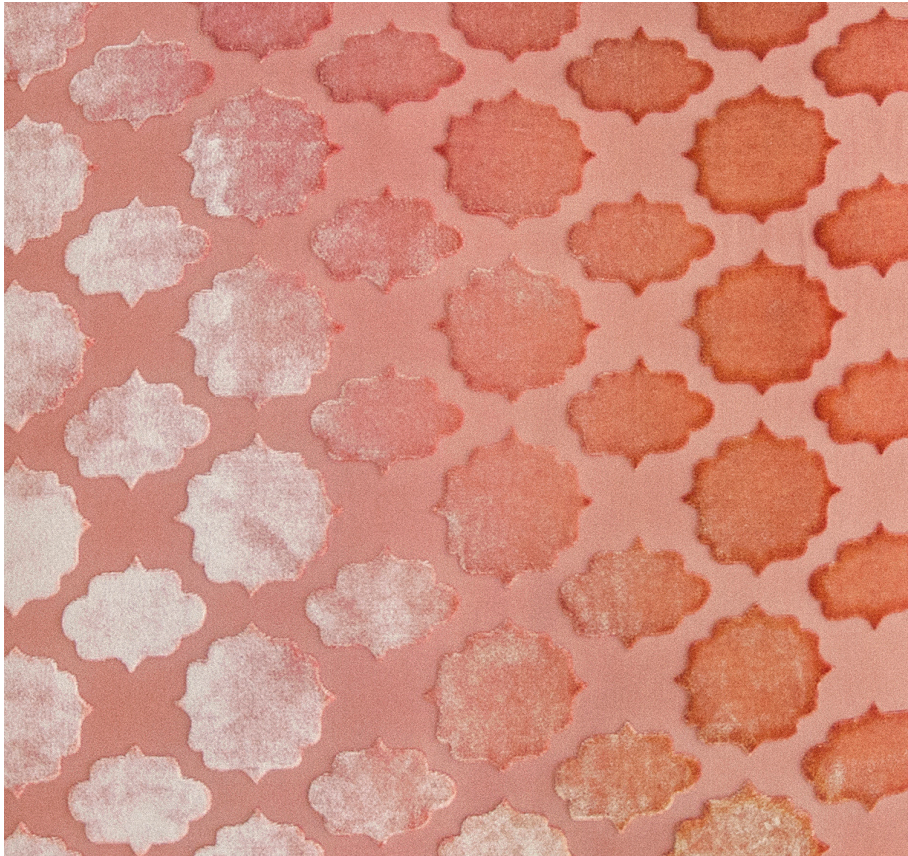


KEVIN O'BRIEN

STUDIO



Mod Fretwork Mango King Sham Case with Charmeuse Backing

Item Number : MFKS-H22

Size : 36"wx20"h

Shown In : Mango

Material : Silk Velvet (35% Silk, 65% Rayon)

Care Instructions : Dry Clean

Description : This luxurious pattern, decorated with whimsical medallions, offers a fresh take on the modern sensibilities of the Swinging Sixties.