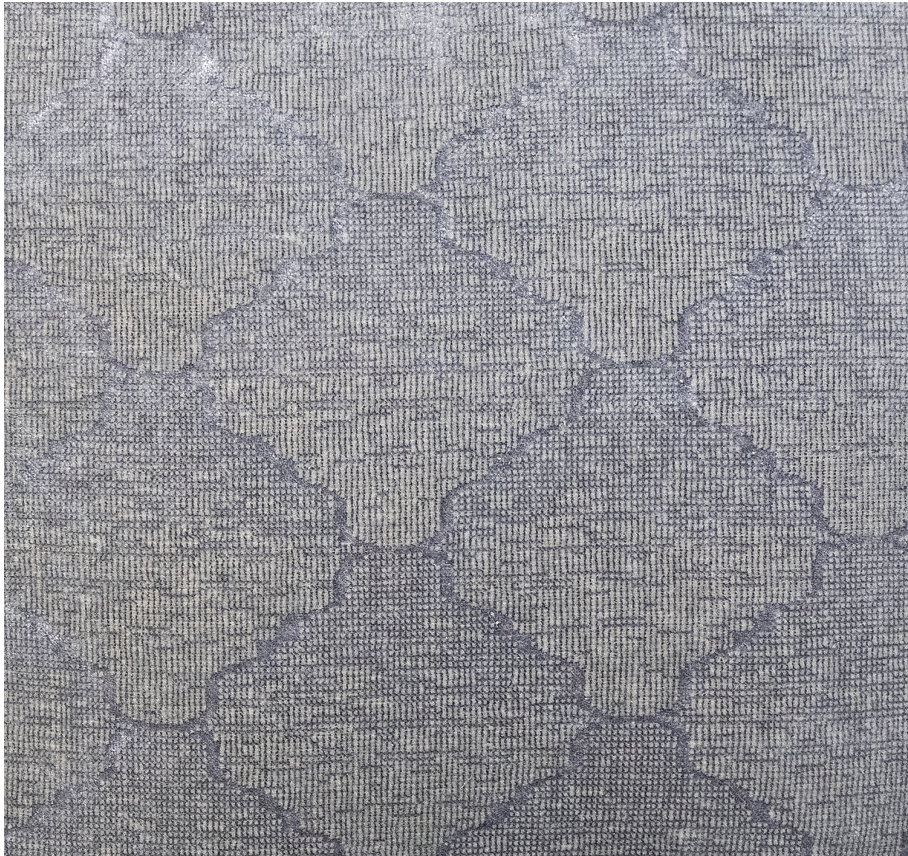


KEVIN O'BRIEN

STUDIO



Medallion Shale Dutch Euro Sham

Item Number : MDJDE-SHL

Size : 84"wx24"h

Shown In : Shale

Material : 50% CO, 26% Linen, 24% Viscose Blend

Care Instructions : Dry Clean

Description : The Medallion pattern features an elegant arched motif that evokes the timeless beauty of traditional Moroccan design. Our Jacquard fabrics feature an intricate fiber weave enhanced by stunning hand-painted color and texture layers.