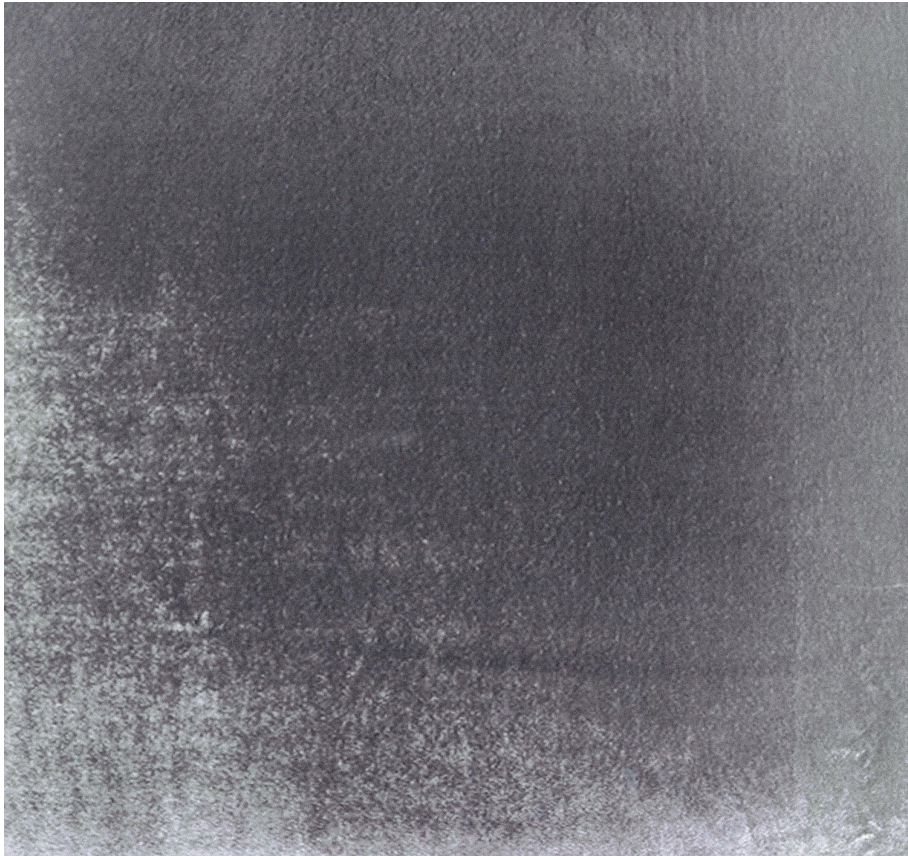


# KEVIN O'BRIEN

## STUDIO



### **Entwined Silver Yardage (3 Yard Minimum)**

**Item Number :** ENTYD-H55

**Size :** 0"wx0"h

**Shown In :** Silver

**Material :** Silk Velvet (35% Silk, 65% Rayon)

**Care Instructions :** Dry Clean Only

**Description :** Entwined is our original pattern that features high and low lines of velvet and silk, creating a dynamic textural design.