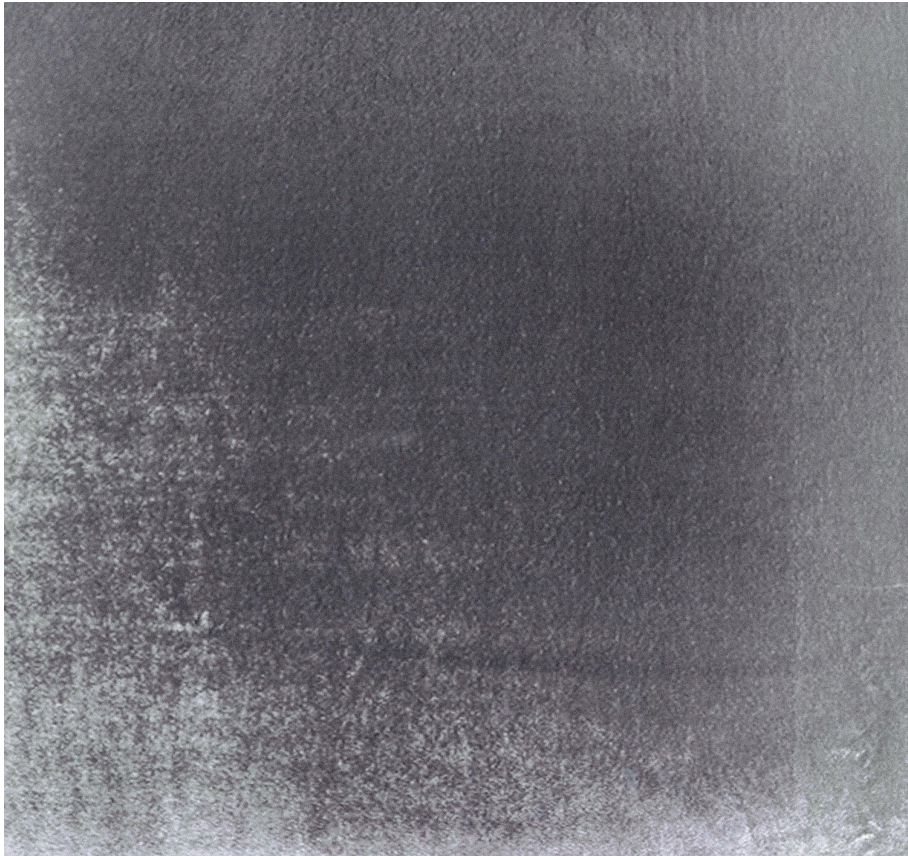


KEVIN O'BRIEN

STUDIO



Entwined Silver Dutch Euro Sham

Item Number : ENTDE-H55

Size : 36"wx26"h

Shown In : Silver

Material : Silk Velvet (35% Silk, 65% Rayon)

Care Instructions : Dry Clean

Description : Entwined is our original pattern that features high and low lines of velvet and silk, creating a dynamic textural design.