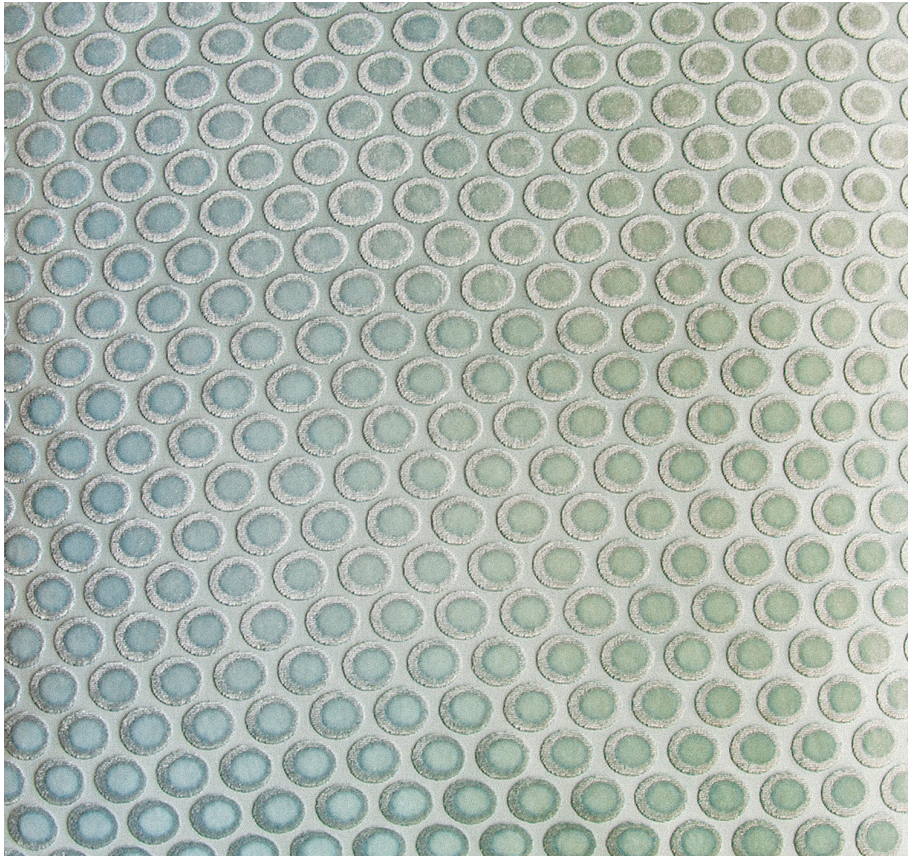


# KEVIN O'BRIEN

## STUDIO



### **Dots Ice Queen Bed Runner with Ombre Velvet Back**

**Item Number :** DR-Q-H12

**Size :** 84"wx16"h

**Shown In :** Ice

**Material :** Silk Velvet (35% Silk, 65% Rayon)

**Care Instructions :** Dry Clean Only

**Description :** The simplicity of this polka dot pattern wonderfully complements its bold and colorful silk velvet base. Using this fabric as a pillow or throw will bring a glamorous 1920s vibe to your space.