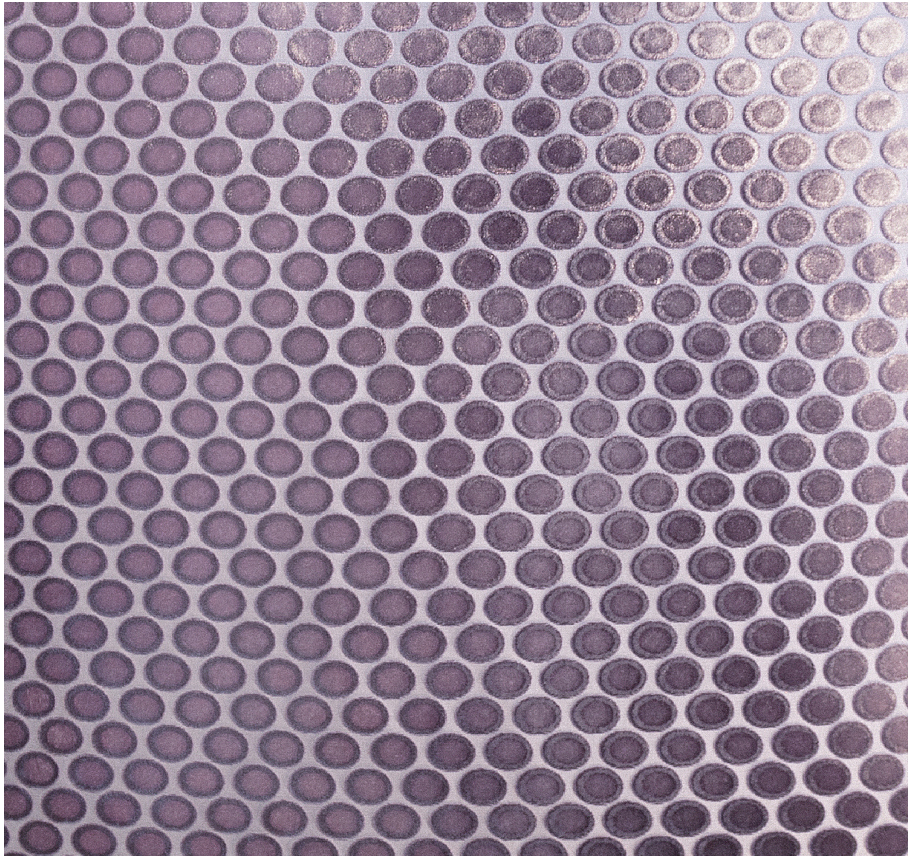


KEVIN O'BRIEN

STUDIO



Dots Thistle Queen Duvet with Charmeuse Back

Item Number : DDV-Q-H78

Size : 92"wx90"h

Shown In : Thistle

Material : Silk Velvet (35% Silk, 65% Rayon)

Care Instructions : Dry Clean Only

Description : The simplicity of this polka dot pattern wonderfully complements its bold and colorful silk velvet base. Using this fabric as a pillow or throw will bring a glamorous 1920s vibe to your space.