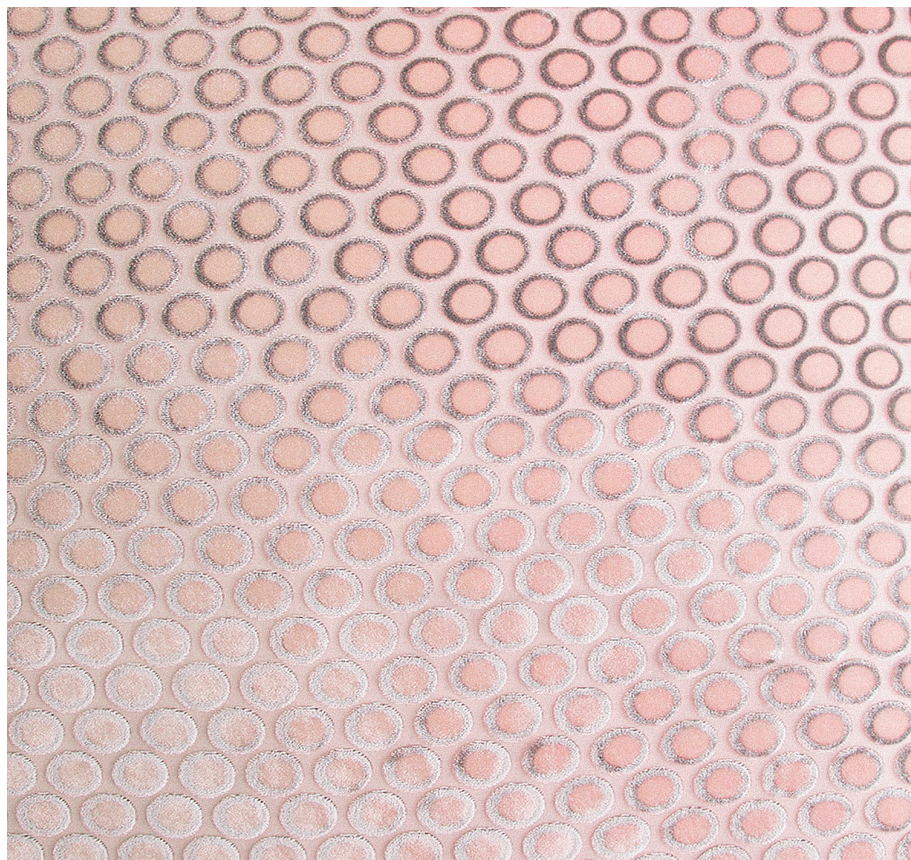


# KEVIN O'BRIEN

## STUDIO



### **Dots Blush Queen Sham Case with Charmeuse Backing**

**Item Number :** DQS-H61

**Size :** 30"wx20"h

**Shown In :** Blush

**Material :** Silk Velvet (35% Silk, 65% Rayon)

**Care Instructions :** Dry Clean

**Description :** The simplicity of this polka dot pattern wonderfully complements its bold and colorful silk velvet base. Using this fabric as a pillow or throw will bring a glamorous 1920s vibe to your space.