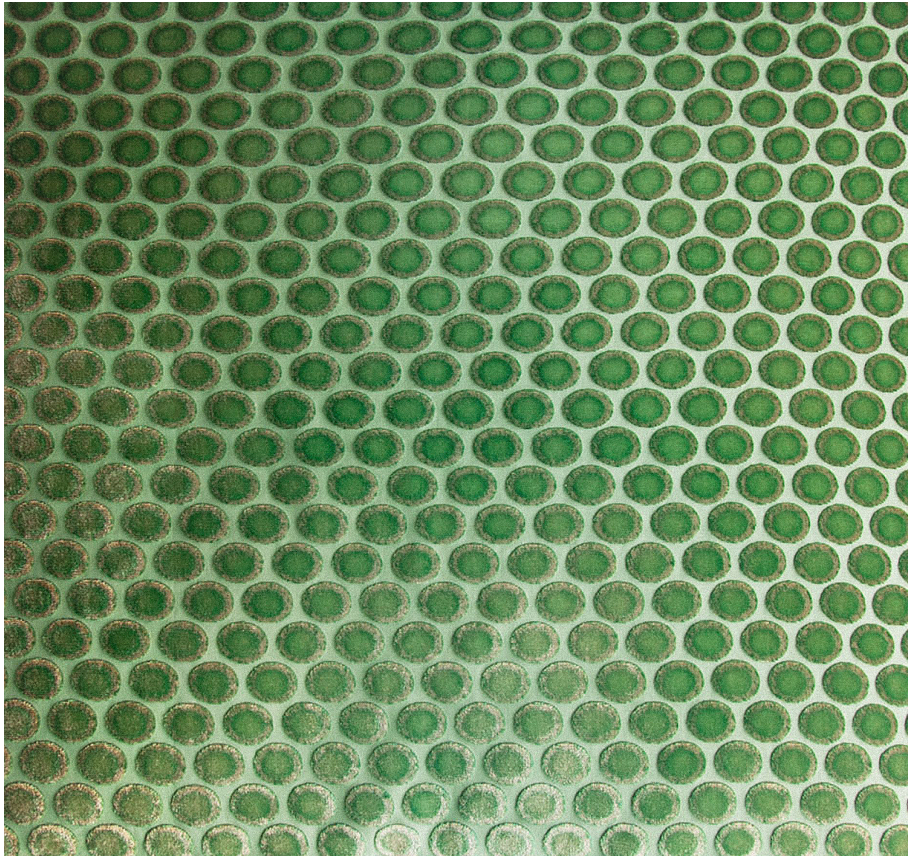


KEVIN O'BRIEN

STUDIO



Dots Grass Queen Sham Case with Charmeuse Backing

Item Number : DQS-GRAS

Size : 30"wx20"h

Shown In : Grass

Material : Silk Velvet (35% Silk, 65% Rayon)

Care Instructions : Dry Clean

Description : The simplicity of this polka dot pattern wonderfully complements its bold and colorful silk velvet base. Using this fabric as a pillow or throw will bring a glamorous 1920s vibe to your space.