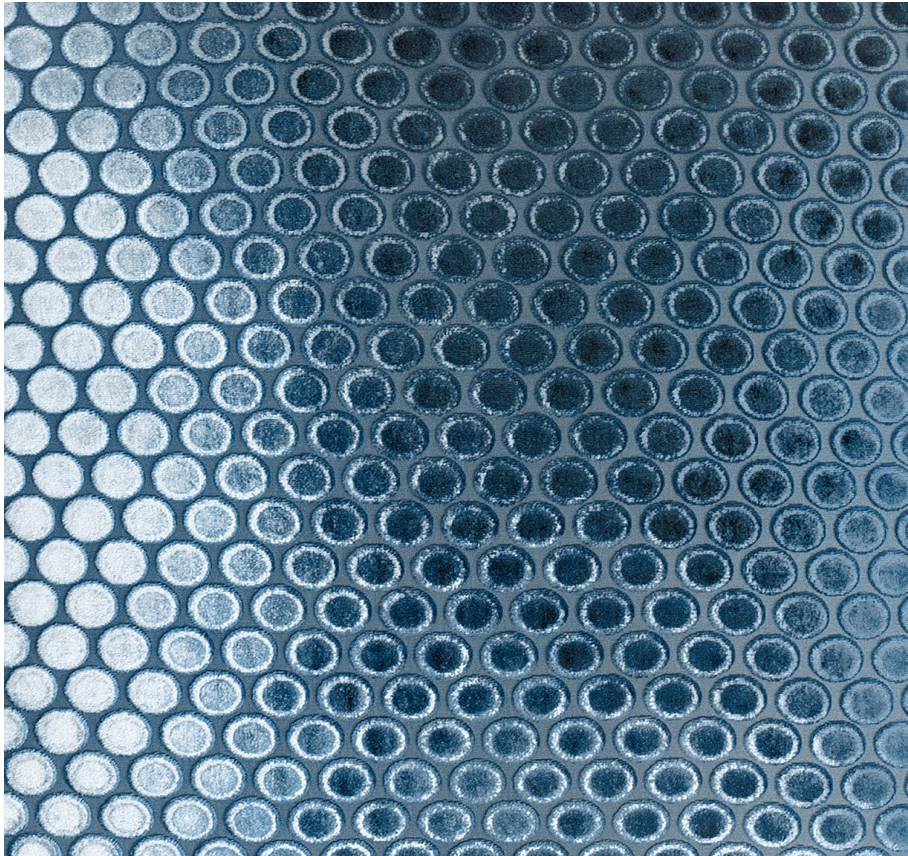


KEVIN O'BRIEN

STUDIO



Dots Denim Dutch Euro Sham

Item Number : DDE-H63

Size : 36"wx26"h

Shown In : Denim

Material : Silk Velvet (35% Silk, 65% Rayon)

Care Instructions : Dry Clean

Description : The simplicity of this polka dot pattern wonderfully complements its bold and colorful silk velvet base. Using this fabric as a pillow or throw will bring a glamorous 1920s vibe to your space.